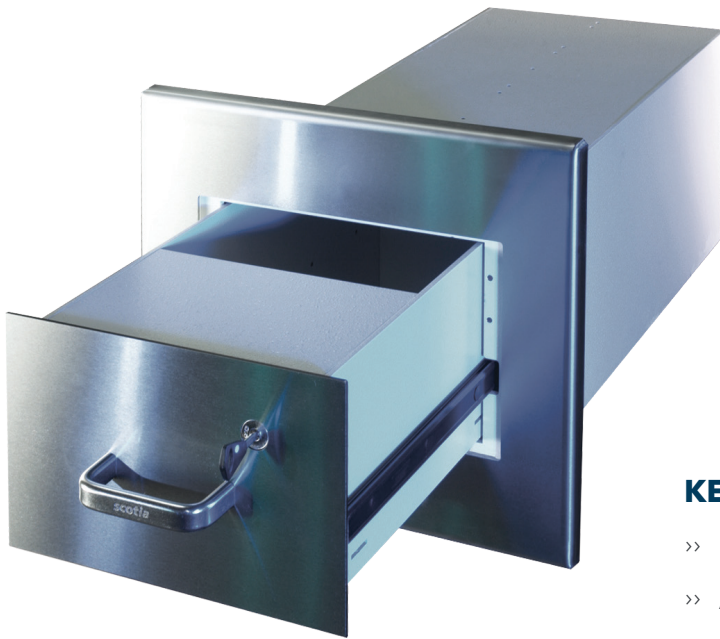




## **EXPRESS**PAY-IN UNITS

---



### **KEY FEATURES**

- » High security
- » Accepts envelopes, bags & wallets
- » Simple to use
- » Quick to install
- » Proven track record

# EXPRESSPAY-IN UNITS



The DS12 range of Express Pay-In Units from Scotia provide rapid and highly secure cash and cheque deposit facilities for retail and business customers.

Two standard versions of the unit are available:

Fascia Type	Deposit Type
Slot	Envelopes
Combined slot and drawer	Envelopes and bags

All provide excellent anti-tamper facilities, restricting unauthorised removal of envelopes, wallets and bags whilst providing snag free operation.

The retainer can be also supplied in customer specified sizes, finishes and security ratings with rapid turnaround. Versions are available with front, rear and side doors, as well as through floor-chute systems or free standing enclosures.



The drawer version can be supplied with optional key locking »

## KEY FEATURES

- » Custom size and site specific units manufactured in house in very short lead times
- » Envelope slot or high security drawer option
- » Dual control retainer locking
- » Choice of rear or side-entry retainers
- » Retainers available to all European Safe Ratings
- » Long reach to accommodate thick walls
- » Provides certified ballistic protection to BS5051-G2 (EN1063-BR4)
- » Small wall aperture required
- » Through-floor chute based systems available
- » Customer specified finishes
- » Supply or nationwide installation service
- » Extremely low maintenance
- » Fully proven track record in U.K. Banks



DSEPU	A	B	C	D	E	F*	Weight
Envelope	350mm	250mm	350mm	350mm	1275mm	0-170mm	135kg
Combined	350mm	250mm	350mm	350mm	1275mm	0-295mm	155kg

