

## BULKTRANSFERUNIT

---

### KEY FEATURES

- » Simple operation with rapid transfer
- » Extremely easy to install
- » CIT approved for latest transit boxes
- » High security
- » Compact footprint, wide size range



# BULKTRANSFERUNIT



The Scotia Bulk Transfer unit enables the secure transfer of CIT Industry standard security boxes, bulk cash and valuables through any type of partition/wall.

The impressively compact dimensions ensure maximum use of space with minimal disruption. 3 stock sizes are available with custom sizes in short lead times.

Proven high-security electromechanical locks deliver class leading protection levels while simplifying operation; the controls and indicator lamps are informative and intuitive to both operator and user.

The Bulk Transfer Unit is 'fail-secure' mains electricity powered, although access is always possible from the secure side via mechanical security override key.



Supplied as standard with height adjustable support frame and aperture collar for rapid installation »

## KEY FEATURES

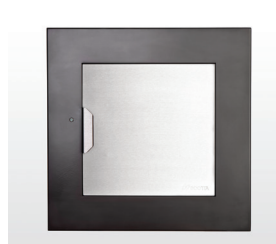
- » Simple operation with rapid transfer
- » Highly reliable electronics
- » CIT approved to suit latest transit boxes
- » High resistance to physical attacks
- » Compact size range to meet any site requirements
- » Mechanical override
- » Custom colours and finishes
- » Simple installation
- » Ballistic rating models
- » Self supporting



Model	Aperture	Transfer Space (lxhxd)*
Standard	550 x 550mm	352 x 352 x 722mm
Slim	420 x 550mm	222 x 352 x 722mm
Lateral	550 x 420mm	352 x 222 x 722mm
Custom	As required	As required



Slim



Standard



Lateral

